

# PRE-K ORIENTATION



Spring  
2023

WoodCreek  
Elementary

# WCE Admin. Team



**Back (Left to Right): Mrs. Jenkins, Ms. Paek, Mr. Mosher, Mrs. Haack, Mrs. Ombrog**  
**Front (Left to Right): Mrs. Robertson, Mrs. Terry, Mrs. Salinas**



# WCE Pre-K Team



**Mrs. Wright - Pre-K Teacher**



**Mrs. McCoy - Pre-K Teacher**



**Mrs. Lopez - Pre-K Aide**



# WCE PTA

## 2023-2024 Executive Board



# Top 5 List from WCE PTA

1. Get Connected to WCE PTA:
  - Visit [www.myrangerpta.org](http://www.myrangerpta.org)
  - Register your family on our website
  - Find us on Facebook @ [WoodCreek Elementary PTA](#)
  - Join the Pre-K Parent Facebook page to connect with other parents. Search for "[WoodCreek Rangers Pre-K 2023-2024](#)"
2. Order School Supplies Through PTA
  - Ordering info coming in May at [www.myrangerpta.org](http://www.myrangerpta.org)
  - Each supply pack includes a PTA membership
3. Join PTA!
  - Visit [myrangerpta.org](http://myrangerpta.org) after July 1<sup>st</sup> to purchase your membership for the 2023-2024 school year.
4. Spirit Wear
  - Discounted styles on sale now
  - '23-'24 Styles on sale in May for pre-orders
  - Order at [myrangerpta.org](http://myrangerpta.org)
5. Get Involved and VOLUNTEER!
  - Email us at [Volunteers@myrangerpta.org](mailto:Volunteers@myrangerpta.org)
  - Dads can get involved with WATCH D.O.G.S.





# Registrar

# Tracy Watson



# Registration Information

- **Tracy Watson** - Registrar  
(281-234-0105)
- **Pre-Registration for 2023-2024**
  - Opens April 3
  - All required documents will need to be uploaded before submitting the registration.
- **Summer Registration Dates:**
  - June 7 - July 30
  - Refer to Katy ISD website ([www.katyisd.org](http://www.katyisd.org)) for details and directions
- **1<sup>st</sup> Day of School (August 16TH)**



# Registration Information cont.



- To qualify for Pre-K, the child must reside in Katy ISD and be four years old on or before September 1<sup>st</sup> of the current school year. Students must also meet the prekindergarten eligibility criteria in order to enroll.
- Pre-K eligibility criteria:
  - Unable to speak or comprehend the English language
  - Is eligible to participate in the national free or reduced-price lunch program
  - Homeless
  - The child of an active duty member of the armed forces of the United States, including the state military forces or the reserves
  - The child of a member of the armed forces of the United States, including the state military forces or the reserves, who was injured or killed while serving on active duty
  - Is or ever has been in foster care
  - The child of a police officer, firefighter, or emergency medical responder seriously injured or killed in the line of duty and received the Star of Texas Award.

To learn more about eligibility, visit

<https://tea.texas.gov/earlychildhoodeducation.aspx>



# Registration Information cont.



- Parents must complete the online registration process through Katy ISD's PowerSchool Registration website. Only students whose registration paperwork is complete will be offered the opportunity to be screened for EL eligibility or prekindergarten program eligibility.
- Click the image below to go to our [PowerSchool Online Registration](#) website to begin the registration process.



\*PowerSchool online pre-registration for 2023-2024 will OPEN for PK-12 grade!

# Registration Information cont.

PREKINDERGARTEN REGISTRATION PARENT  
INFORMATION SHEET

## documentation needed for pre-k registration

### All Qualifiers:



**Birth Certificate**



**Proof of Address**



**Parent ID**



**Immunization Record**

### Income Qualifiers:

One of the following:

- Current paycheck stub
- Current tax return if self-employed
- Current TANF or SNAP eligibility letter

### Language Qualifiers:

- Fill out Home Language Survey (provided by school)
- Language test will be administered to the child

### Military Qualifiers:

One of the following:

- Verification of U.S. Department of Defense photo I.D.
- Statement of service
- Copy of death certificate
- Copy of Purple Heart orders
- Copy of official letter from commander
- Copy of a letter from US Dept. of Veteran's Affairs
- Documentation that service member is MIA

### Foster Care Qualifiers:

- Verification Letter of Prekindergarten Eligibility from DFPS

### Star of Texas Award Qualifiers:

- Copy of the resolution (certificate) awarded to parent of child.



# Registration Information cont.

## Language Assessments

If a language assessment is required, the District will contact the family via email or over the phone to schedule an appointment for testing. Families will be contacted in the order that their online registration is received. Due to safety precautions related to the COVID-19 Emergency, the District is only able to assess a limited number of students at a time.

All students will be pre-screened prior to entering the testing site. Parents will be asked to complete a Pre-Screening form verifying that the child is symptom-free.

## Attendance Guidelines

- Prekindergarten is not a mandatory program. However, if your child qualifies and is enrolled, he/she is subject to compulsory attendance law. Your child must attend school each day, Monday - Friday. Prekindergarten is a full-day program.

## Free & Reduced Lunch for 2023-2024 Prekindergarten Students:

Prekindergarten students registering for the 2023-2024 school year must apply for meal benefits (and do NOT automatically qualify for meals). For additional information visit the [Food Services](#) site.

# Privacy Codes

### 3. What are the privacy code options from which a parent/guardian can choose?

There are three privacy codes from which a parent/guardian may choose: Y - Yes, O - Other, and N - No. Please refer to the chart for the implications of each code.

<b>Privacy Code Selections and Implications</b>	<b>“Y” Yes</b>	<b>“O” Other</b>	<b>“N” No</b>
School-Confined Publications	YES	YES	NO
Programs for Performances	YES	YES	NO
Yearbook	YES	YES	NO
Professional School Group or Class Photos*	YES	YES	NO
Officially-designated vendors for school-related purposes	YES	YES	NO
The Public: Anyone making a public information request	YES	NO	NO
News Releases	YES	NO	NO
School Directories	YES	NO	NO
School Publications (Available to Public)	YES	NO	NO
District/Campus Webpage	YES	NO	NO
Photographs	YES	NO	NO
Social Media Platforms	YES	NO	NO

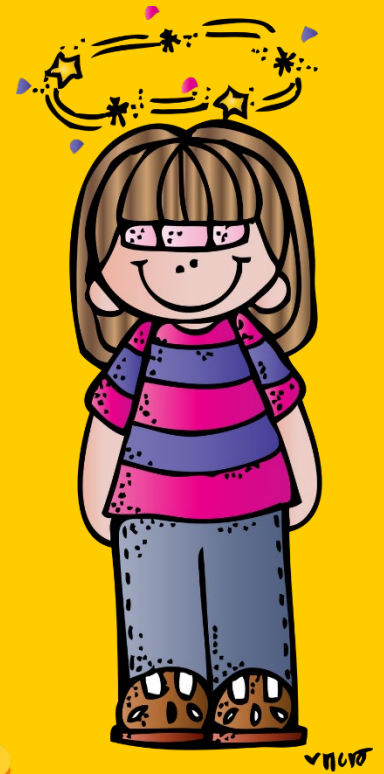


# School Nurse & Nurse's Aide Katie Porter & Erica Niemi



# Immunizations & Health

- **Katie Porter**  
WCE School Nurse  
(281-234-0088)
- Immunizations
- Medications at school
- Health Services for students





# IMMUNIZATIONS

- Texas Department of Health requires all school age children to be up to date on immunizations. Children are excluded from school until the required immunizations are obtained and a copy is given to the school nurse. Immunization requirements can be found at: [www.katyisd.org](http://www.katyisd.org)



<- Click the image to go to the  
2023-24 Vaccine Requirements Form

- Contact school nurse with questions.



# 24 HOUR RULE

- If your child has a FEVER (100° or above), VOMITING, or DIARRHEA, Katy ISD guidelines state that he or she must stay home for 24 hours.
- To give your child time to recuperate and to protect classmates and teachers, the child must be symptom free without the aid of medications for a 24-hour day before returning to school.





# MEDICATIONS



- Children may not carry medicine with them at school - not even cough drops. If your child needs medicine at school, send a note completed by a parent or the physician plus the medicine in its original container. You or your child can drop it off in the clinic before going to class.
- Three times a day medications are not given at school. All doses can be given at home. This was determined by Pediatricians in the area and is a District Policy.
- The official form can be found at the Katy ISD website.



[← Click the image to go to the Medication Administration Form](#)



# CLINIC



- Vision and hearing screenings will be done in the fall.
- During online registration, there will be a place for you to provide phone numbers where you can be reached as well as local emergency contacts who can be reached if you are unavailable.
  - It is vital that the phone numbers are accurate.
  - Please give the phone numbers an order as to who should be called first, second, etc.
  - Please fill out the Health Inventory. If your child has a condition you need to speak to the nurse about, please call or come by at the beginning of the school year.



# Welcome to



# Social Readiness

We work on these daily:

- Follows simple directions
- Communicates needs
- Knows how to share
- Takes turns
- Plays and gets along well with others

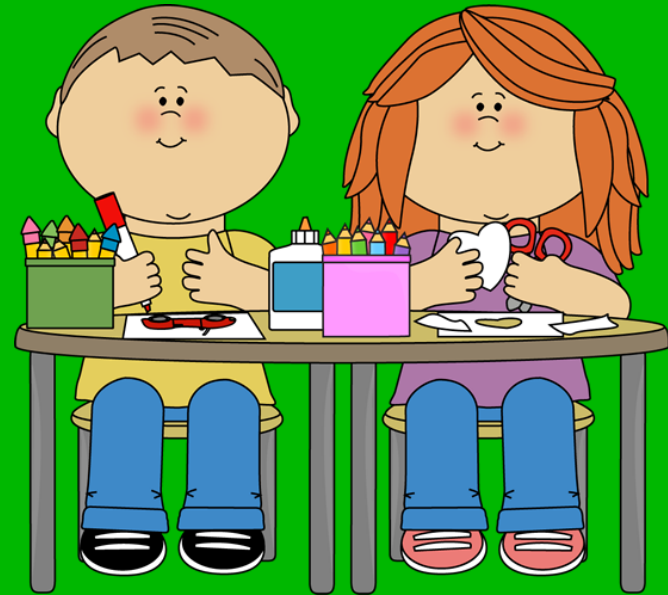


So nice to meet you



# Physical Readiness

- Eats independently
- Uses the restroom independently
- Puts on shoes and clothes independently



# A Typical Day in Pre-K



Arrival, Unpack, Check in, STEM Centers
Announcements
Community Circle
Calendar/Morning Message/Alphabet Review
Literacy Circle Time
Sunshine Break
Fine Motor/Literacy Rotations
Specials
Lunch
Recess
Math/Science Circle Time
Rest
Snack/pack up
Math/Science Rotations
Purposeful Play
Clean Up/review of day
Dismissal



# Specials

- Art
- Music
- Physical Education
- 30 minutes each day
- Daily rotation schedule
- One of the most popular times of the day



# Recess/Snack

- 15 minutes of Snack & a Sunshine Break
- 20 minutes of Recess





# Lunch

- 30 minutes each day
- Current Price: \$2.25/tray
- Children can either bring a lunch from home or purchase a school lunch.
- I.D. badges are used to purchase lunches.
- Cafeteria monitors and volunteers are in the cafeteria each day.
- Prepayment is encouraged! Please [CLICK HERE to access Pay-N-Go.](#)
- We ask that you please **NOT** come to eat lunch with your child for the first 2 weeks of school as they transition into a new routine and environment. Midday separation is extra challenging in the beginning!



# Librarian & Library Aide

## Lesley Baker & Kathy Caldwell

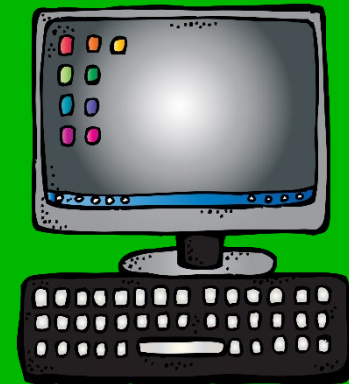


# Library and Technology



- I-Pads in the classroom that reinforce and enrich literacy and math skills

- Weekly library visit scheduled
- Library lessons
- Book checkouts at least once a week



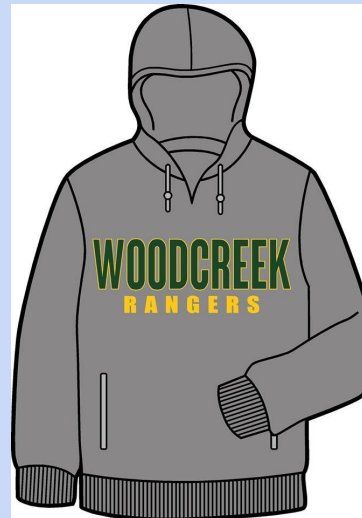
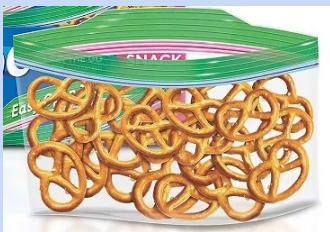


# General Information



# Put Names on EVERYTHING

- Backpacks
- Lunch kits
- Snacks
- Coats
- Water bottles
- Nap Mats



# Backpacks

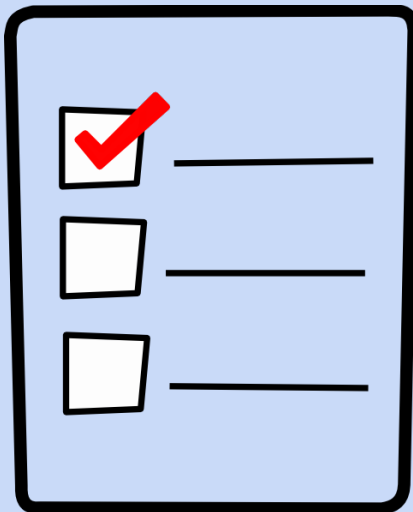
- Large enough to hold folders and a library book
- Easy to open and close
- No rolling backpacks PLEASE!





# School Supplies

- Follow recommended school supply list to purchase supplies (highly recommended to purchase PTA school supplies)
- Please DO NOT label supplies with your child's name
- Supplies will be used as community supplies
- Pre-ordered supplies will be ready for pickup before school starts or delivered to classrooms



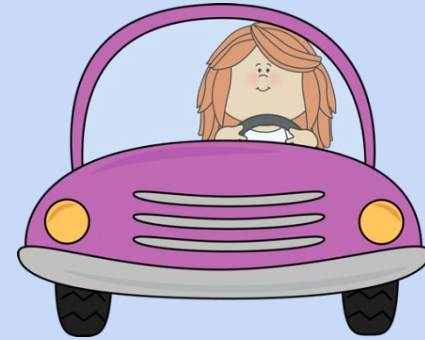
# Dressing for School

- Policy is listed on the KISD website
- Elastic pants/shorts are best at the beginning of the year  
...remember potty time 😊
- Flip flops are strongly discouraged
- Ziploc baggie of extra clothes, including underwear and socks, for those "just in case" moments (kept in backpack)



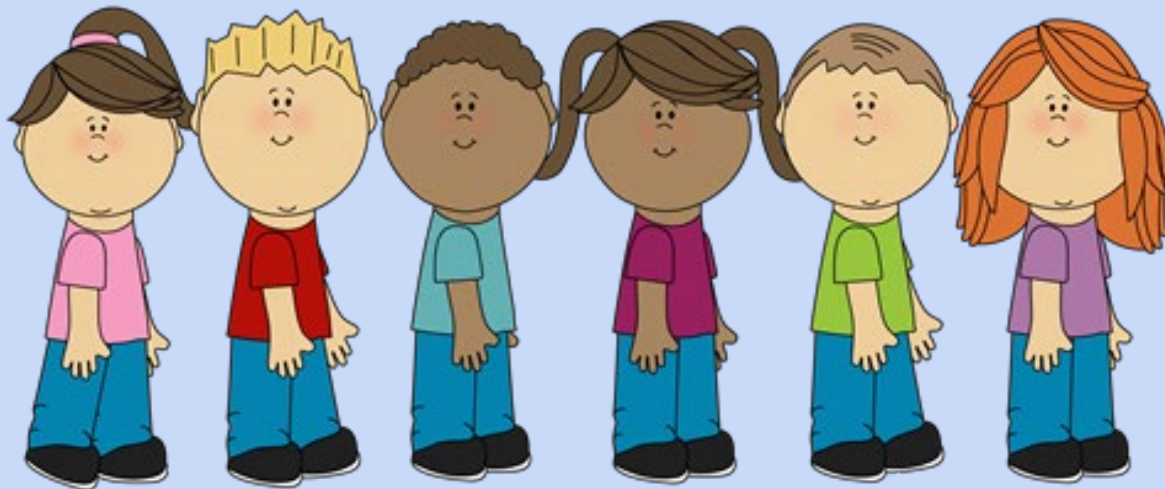
# Transportation

- How will your child go home on the first day and rest of the year?
  - Car (Parent Pick-Up)
  - Hiker/Biker
  - Daycare
  - Bus transportation is **NOT** provided for Pre-K
- Try to keep the mode of transportation consistent day to day.
- Please decide your child's method of transportation home prior to Meet the Teacher.





1<sup>st</sup> Day of



# Things To Do: "Parents"



- School Hours (currently) 7:50 a.m.- 3:00 p.m.
  - \*Students can start entering the classroom at 7:25 a.m.
- You can bring your child to school and walk him/her to class on the first day 😊
- Receive forms, review, complete, and return as soon as possible
- Confirm method of transportation going home
- Make sure your child has lunch money (\$2.25 -current price) or a packed lunch from home
- Quickly and cheerfully exit! 😊



# Dates to Remember

- Registration : Opens April 3, 2023
- Meet the Teacher : TBD
- First Day : August 16<sup>th</sup>
- Curriculum Night : TBD

(Topics to be covered: Pre-K Curriculum, Behavior Expectations, Canvas, & much more!)

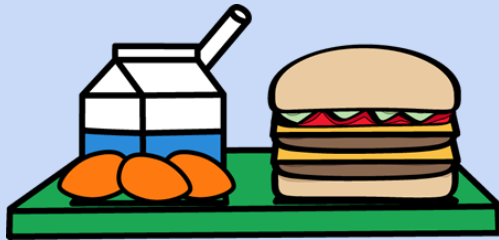


Important

# Final Reminders

Important

- Please plan to attend Meet the Teacher 😊
- Send your child daily with a:
  - backpack
  - lunch (unless he/she is purchasing a school lunch)
  - water (sports top)
  - 1 snack (packed separately from lunch in a small zip lock bag with your child's name on it. No utensils needed)



We are looking forward  
to a **FABULOUS** year!



# Questions?

